

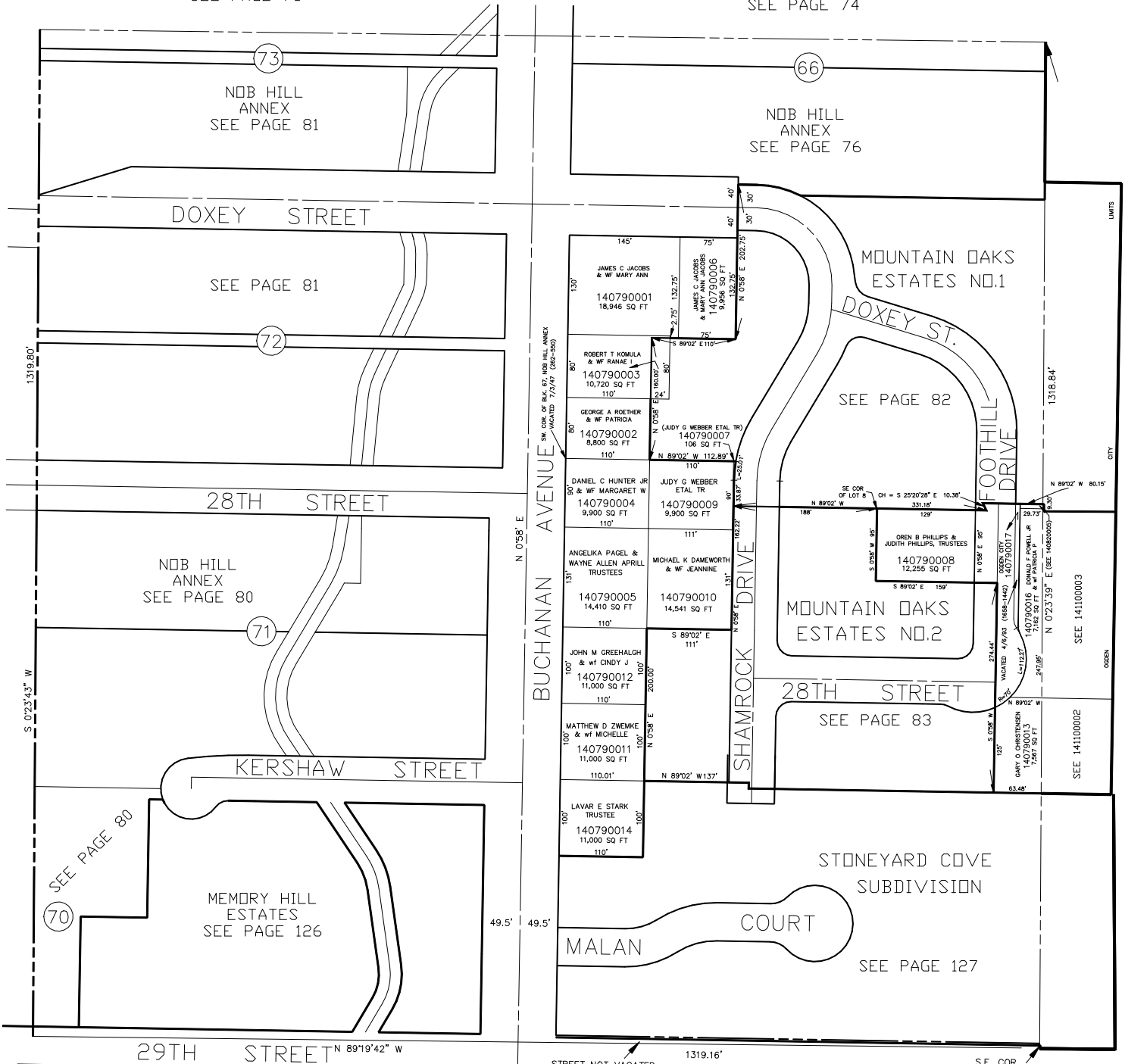
SE.1/4, OF THE NE.1/4, OF SECTION 34, T6N., R1W., S.L.B.&M.

IN OGDEN CITY  
SCALE 1" = 100'

TAXING UNIT: 25

SEE PAGE 78

SEE PAGE 74



SEE PAGE 97

SEE PAGE 110

SEE PAGE 103

STREET NOT VACATED  
ALL PLATTING IN AND BETWEEN  
BLOCKS 67, 68 & 69  
VACATED 7/47 (262-550).

PLATTING SOUTH OF 1/4 SECTION LINE  
VACATED 11/2/49 (323-510).  
S.E. COR.  
OF N.E. 1/4